



T20L120D



Excellent Schottky Barrier Rectifiers



DO-201AD

Features

- High current capability
- High surge current capability
- Low reverse current
- Component in accordance to RoHS 2002/95/EC

Ordering Information

| Part No. | Package | Packing |
|----------|----------|-----------|
| T20L120D | DO-201AD | 500 / Box |

Device P/N

| Part Number | Remark |
|-------------|--------------|
| T20L120D | General |
| T20L120D-H | Halogen Free |

Primary Characteristics

| | | |
|-----------|------|----|
| I_F | 15 | A |
| V_{RRM} | 120 | V |
| I_{FSM} | 250 | A |
| V_F | 0.81 | V |
| T_J max | 150 | °C |

Mechanical Data

- Cases: DO-201AD
- Case Material: Molded Plastic. UL Flammability Classification Rating 94V-0
- Terminals: Lead free Plating (Tin Finish)
Solderable per MIL-STD-202, Method 208
- Polarity: Cathode Band
- Weight: 1.071 grams (approximate)

Maximum Ratings (TA=25°C unless otherwise noted)

| PARAMETER | SYMBOL | T20L120D | UNIT |
|--|-----------------|------------------------|------|
| Maximum repetitive peak reverse voltage | V_{RRM} | 120 | V |
| Maximum RMS voltage | V_{RMS} | 84 | V |
| Maximum DC blocking voltage | V_{DC} | 120 | V |
| Maximum average forward rectified current | I_F | 20.0 | A |
| Peak forward surge current, 8.3ms single half sine-wave superimposed on rated load | I_{FSM} | 250.0 | A |
| Maximum Instantaneous Forward Voltage IF=3A @ 25°C IF=20A @ 25°C | V_F | 0.46 Typ. 0.81 Max. | V |
| Maximum DC Reverse Current @ TA=25°C at Rated DC Blocking Voltage @ TA=125°C | I_R | 0.2 50 | mA |
| Typical Junction Capacitance(NOTE1) | C_j | 1110 | pF |
| Typical Thermal Resistance | $R_{\theta JC}$ | 20 | °C/W |
| Operating Temperature Range | T_J | -55 to +150 | °C |
| Storage Temperature Range | T_{STG} | -55 to +150 | °C |
| Marking Code | | 20L120D · T20L120D | |

NOTES:

1. Measured at 1.0MHZ and applied reverse voltage of 4.0V DC



Excellent Schottky Barrier Rectifiers

Rating and Characteristics Curves

FIG. 1-Typical Forward Current Derating Curve

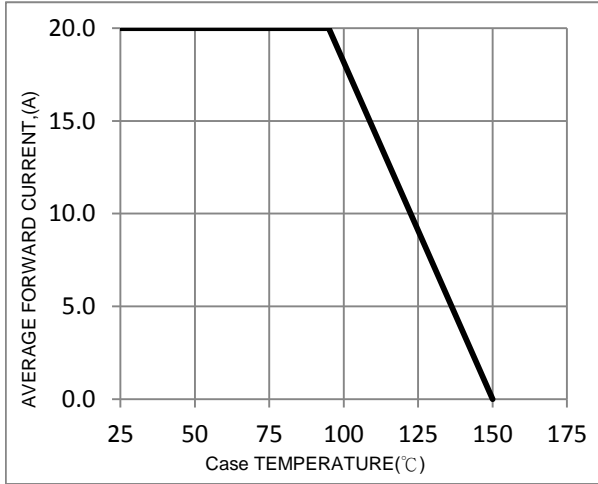


FIG. 2-Typical Forward Characteristics

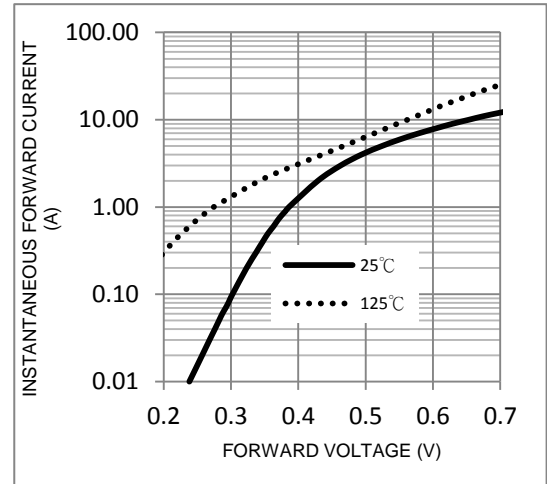


FIG. 3-Maximum Non-Repetitive Forward Surge Current

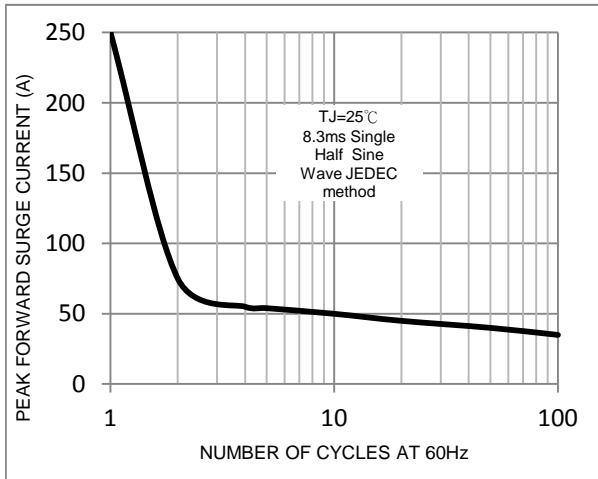


FIG. 4-Typical Reverse Characteristics

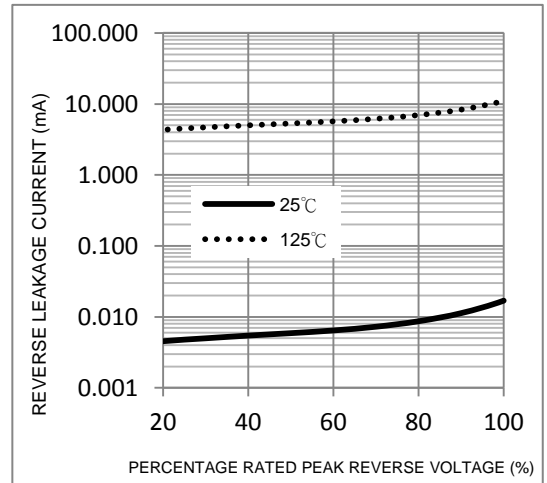
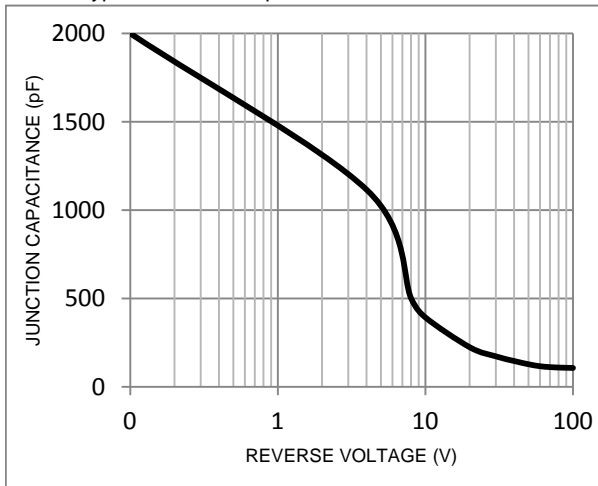
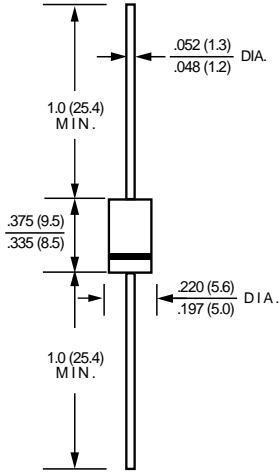


FIG. 5-Typical Junction Capacitance



Package Outline Dimensions



DO-201AD

Dimensions in inches and (millimeters)

Marking Information



Bulk Packing

| Package | Inner Pack | Inner Box (EA) | Inner Box (mm) | Carton (EA) | Carton Size (mm) | Gross Weight (Kg)-Approx. |
|-----------------|------------|----------------|----------------|-------------|------------------|---------------------------|
| DO-201AD(DO-27) | Box | 500 | 300x77x39 | 12000 | 475x220x260 | 16 |