



**P5E300D**



## Excellent Schottky Barrier Rectifiers



**DO-201AD**

Primary Characteristics		
$I_F$	5	A
$V_{RRM}$	300	V
$I_{FSM}$	120	A
$V_F$	0.86	V
$T_J$ max	150	°C

Features
<ul style="list-style-type: none"> <li>• High current capability</li> <li>• High surge current capability</li> <li>• Low reverse current</li> <li>• Component in accordance to RoHS 2002/95/EC</li> </ul>

Mechanical Data
• Cases: DO-201AD
• Case Material: Molded Plastic. UL Flammability Classification Rating 94V-0
• Terminals: Lead free Plating (Tin Finish) Solderable per MIL-STD-202, Method 208
• Polarity: Cathode Band
• Weight: 1.071 grams (approximate)

Ordering Information			
Part No.	Remark	Package	Packing
P5E300D	General	DO-201AD	1200 / Ammo Box
P5E300D-H	Halogen Free		

Maximum Ratings (TA=25°C unless otherwise noted)			
PARAMETER	SYMBOL	P5E300D	UNIT
Maximum repetitive peak reverse voltage	$V_{RRM}$	300	V
Maximum RMS voltage	$V_{RMS}$	210	V
Maximum DC blocking voltage	$V_{DC}$	300	V
Maximum average forward rectified current	$I_F$	5.0	A
Peak forward surge current, 8.3ms single half sine-wave superimposed on rated load	$I_{FSM}$	120.0	A
Maximum Instantaneous Forward Voltage IF=3A @ 25°C IF=5A @ 25°C	$V_F$	0.77 Typ. 0.86 Max.	V
Maximum DC Reverse Current @ TA=25°C at Rated DC Blocking Voltage @ TA=125°C	$I_R$	0.2 5	mA
Typical Junction Capacitance(NOTE1)	$C_j$	90	pF
Typical Thermal Resistance	$R_{\theta JC}$	30	°C/W
Operating Temperature Range	$T_J$	-55 to +150	°C
Storage Temperature Range	$T_{STG}$	-55 to +150	°C
Marking Code		P5E300D · 5E300D	

**NOTES:**

1. Measured at 1.0MHZ and applied reverse voltage of 4.0V DC



# Excellent Schottky Barrier Rectifiers

## Rating and Characteristics Curves

FIG. 1-Typical Forward Current Derating Curve

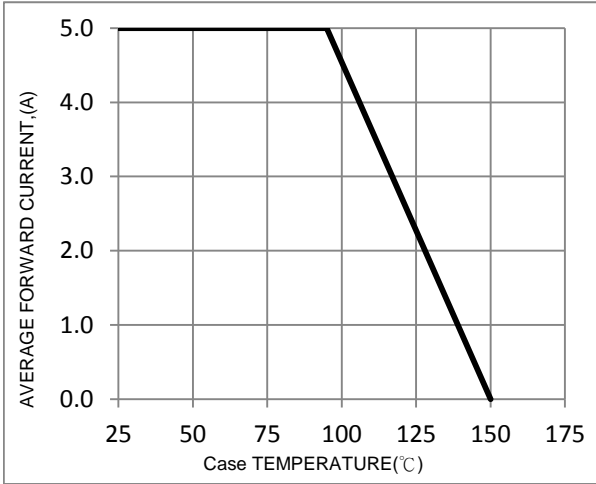


FIG. 2-Typical Forward Characteristics

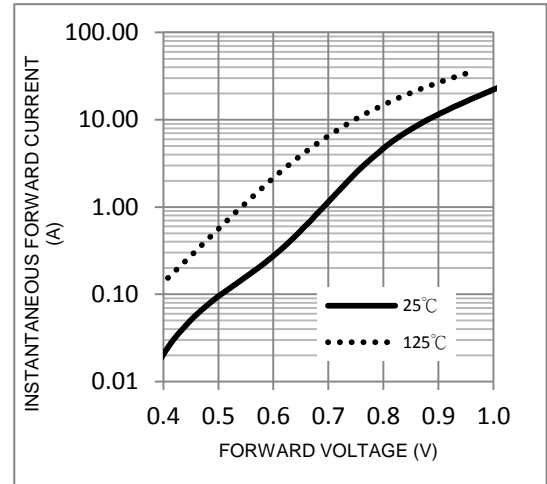


FIG. 3-Maximum Non-Repetitive Forward Surge Current

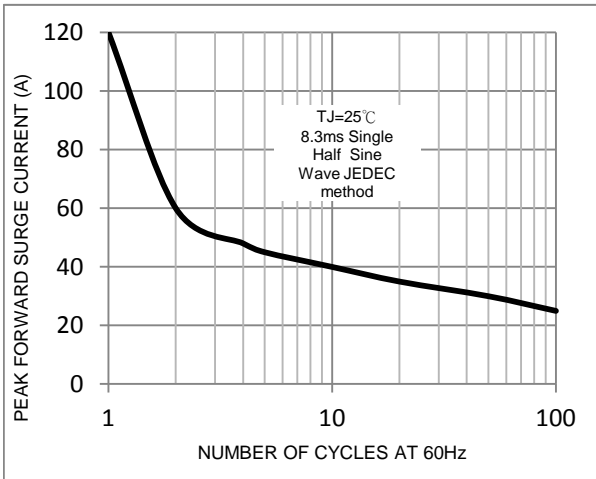


FIG. 4-Typical Reverse Characteristics

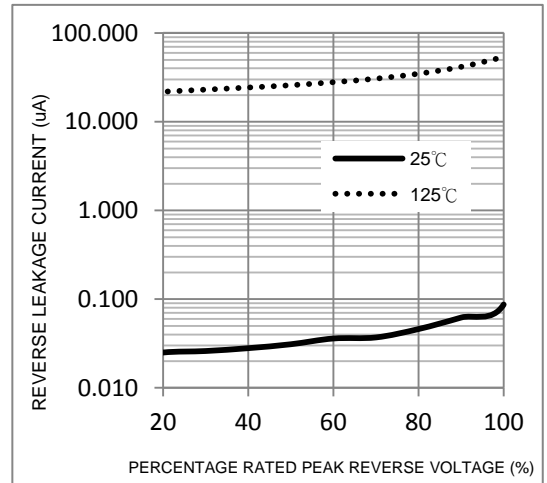
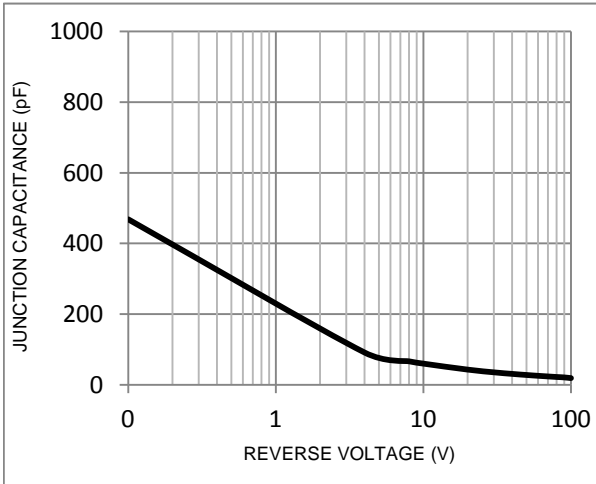
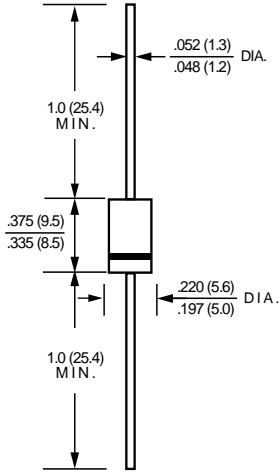


FIG. 5-Typical Junction Capacitance





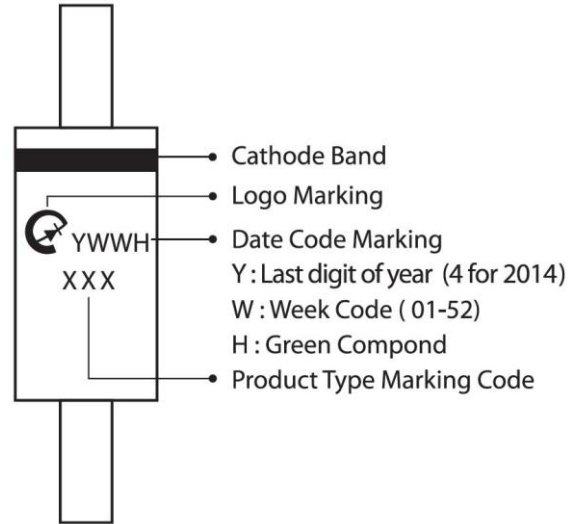
Package Outline Dimensions



DO-201AD

Dimensions in inches and (millimeters)

Marking Information



Ammo Box Packing

Package	Inner	BOX	Inner Box	Carton	Carton Size	Gross Weight
	Pack	(EA)	(mm)	(EA)	(mm)	(Kg)-Approx.
DO-201AD(DO-27)-52mm	Reel	1,200	255x75x150	12000	440x280x335	16